



Additional photos of a Widmann-marked sword appearing to conform to the “Marine Music Boy” pattern. Note that the blade is marked with the king’s head associated with Weyersberg of Solingen, a prolific supplier of blades to the sword-making trade both in Europe and the United States.

Horstmann Examples

As was mentioned earlier, examples of these swords by Horstmann are marked in a variety of locations, including both stamping and etching. Sometimes we see “W.H.Horstmann & Sons/Makers” in three lines stamped under the counterguard. Other times the blade’s obverse is etched “W.H.HORSTMANN AND SONS/PHILADELPHIA” in two lines. Other markings include “HORSTMANN” in

one line struck under the counterguard with no identifying mark on the blade — or, in some instances, with the blade also etched “W.H.HORSTMANN AND SONS/PHILADELPHIA” as described above. Yet other examples have no stamp under the counterguard, no blade identifying etching, but “HORSTMANN & SONS/PHILADELPHIA” stamped on the obverse ricasso. There appears to be no rhyme or reason to all of this, but collectors can refer to the specifica-



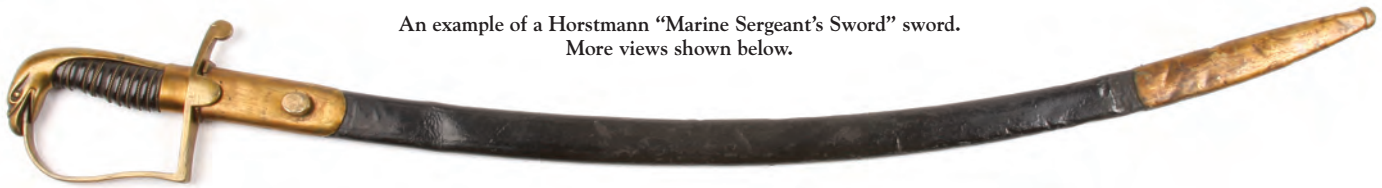
A particularly fine “Marine Music Boy” sword stamped “HORSTMANN” under the counterguard and etched “W.H. HORSTMANN & SONS/PHILADELPHIA” on the blade.



Another view of the fine Horstmann "Marine Music Boy" sword.
Notice the maker's mark etched in a ribbon on the blade.



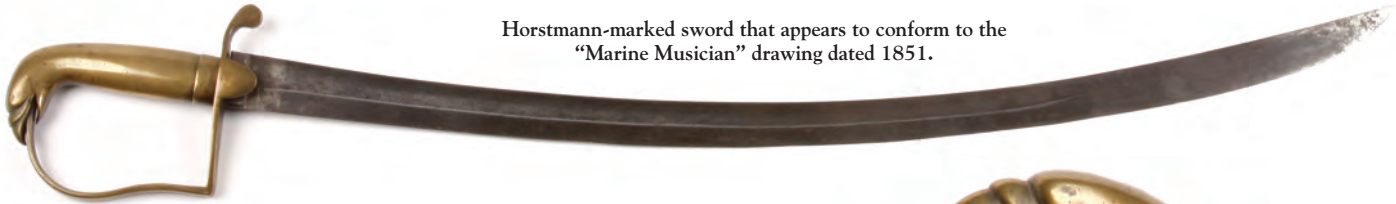
An example of a Horstmann "Marine Sergeant's Sword" sword.
More views shown below.



Cropped image of the Horstmann
"Marine Musician" drawing dated 1851.



Horstmann-marked sword that appears to conform to the
"Marine Musician" drawing dated 1851.



tions list at the end of this article for more specifics on the physical features of examples in my collection.

Unmarked Examples Attributed to Either Widmann or Horstmann

The following swords, while completely unmarked as to maker, appear to be the product of either Widmann or Horstmann. The blades are different, but the cast grips are virtually identical to each other and to the Widmann/Horstmann Marine Musician sword. The knuckle bow on the Marine Musician is a reverse "P" and on the unidentified swords is a "D". The Marine Musician has langets; the unknowns do not.

It should be noted that the blades on all of these swords (whether Widmann, Horstmann or unmarked, appear to be imports, mostly German. A "kings head", the stamp of the Weyersberg Firm of Solingen, appears on some of the blades. This is as we would expect, since both firms used imported German blades extensively. It should also be noted that the etching, when present, is generic with the exception of two of the unknown swords described above. □

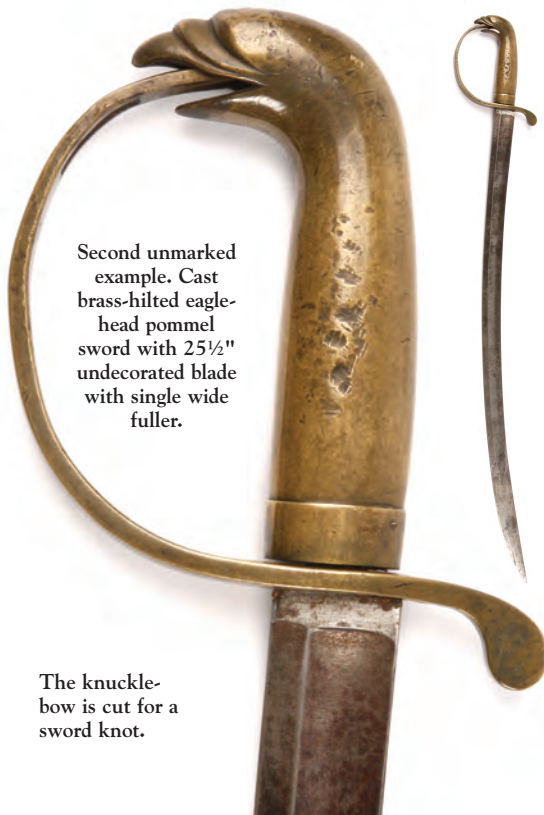


A close-up of the hilt on the Horstmann "Marine Musician" sword.

(below) The first unmarked example. Cast brass-hilted eagle-head pommel sword with 31¼" imported blade etched on the obverse with American eagle, ribbon with "E PLURIBUS UNUM" and 16 stars and on the reverse the motto "HONOUR AND MY COUNTRY".

The knucklebow is cut for a sword knot. The sword is accompanied with a brass-mounted leather scabbard; the frog is a modern reproduction.





Second unmarked example. Cast brass-hilted eagle-head pommel sword with 25½" undecorated blade with single wide fuller.

The knucklebow is cut for a sword knot.



The third unmarked example, having an identical cast brass-hilted eagle-head pommel sword but with 30" blade etched on the obverse with a crested eagle with American shield on breast with 15 stars and in the beak a ribbon with the device "E Pluribus Unum". There is generic etching on the reverse. It appears that the blade and the grip did not begin together. There is a two-branch knucklebow. There are no maker's stamps.



SWORD SPECIFICATIONS FOR COLLECTOR REFERENCE

MARINE SERGEANT'S SWORDS

Widmann: Stamped under crossguard in two lines "F.W. WIDMANN/PHILADA". Length overall 37¼". Blade length 31¾"; width at ricasso 1¼". Single wide fuller. Generic etching with gold and blue wash. Grip leather with single strand brass wire. Cast brass eagle-head pommel with continuous back strap knuckle bow reverse "P". Langets, ferrule ½". Scabbard: brass-mounted leather with frog stud only. Throat 4¼", drag 7".

Widmann: Stamped under crossguard in two lines "F.W. WIDMANN/PHILADA". Length overall 37". Blade length 31¼"; width at ricasso 1¼". Single wide fuller, generic etching with gold and blue wash. Grip leather with single strand brass wire, cast brass, eagle-head pommel with continuous backstrap, knucklebow reverse "P". Langets, ferrule ¾". Scabbard, brass-mounted leather with frog stud only. Throat 5¾", drag 10¾".

Horstmann: Stamped under crossguard in three lines "W.H.Horstmann/& Sons/Makers". Length overall 37¼". Blade length 31½"; width at ricasso 1½". Single wide fuller. Generic etching – on obverse "W.H.Horstmann/& Sons/Philada". Blade in the white. Grip leather wrapped with double strand brass wire. Cast brass, eagle-head pommel with continuous backstrap knuckle bow reverse "P". Langets, ferrule ¾". Scabbard is brass-mounted leather with frog stud only. Throat 4½", Drag 7½".

Horstmann: Stamped under crossguard "HORSTMANN". Length overall 37¼". Blade length 31¾"; width at ricasso 1¼". Single wide fuller. Generic etching with gold and blue wash. Grip is leather with double strand brass wire. Cast brass, eagle-head pommel with continuous back strap, knuckle bow reverse "P". Langets. Scabbard is brass mounted leather with frog stud only. Throat 4¼", Drag 7".

Horstmann: Stamped under crossguard "HORSTMANN". Length overall 37½". Blade

length 31¾"; width at ricasso 1¼". Single wide fuller. Etched with gold and blue wash, obverse shield with 16 stars. Grip is leather with double strand brass wire. Cast brass, eagle-head pommel with continuous backstrap, knucklebow reverse "P". Langets. Scabbard: none.

MARINE MUSICIAN SWORDS

Horstmann: Stamped under the crossguard "W.H. HORSTMANN/& SONS/MAKER. Etched on blade obverse "W.H. HORSTMANN & SONS/PHILADELPHIA". Length overall 32¼". Blade length 27½"; width at ricasso 1¼". Single wide fuller. Langets. Grip is cast brass, eagle-head pommel. Knucklebow reverse "P". Langets, ½" ferrule. Scabbard: none.

MARINE MUSIC BOY SWORDS

Widmann: Stamped under crossguard "F.W. WIDMANN/PHILADA". King's head stamped on obverse blade ricasso. Length overall 28½". Blade length 23½"; width at ricasso 1½". Single wide fuller. Generic etching. Grip is cast brass with eagle-head pommel, knucklebow reverse "P". Langets: none. Scabbard: none.

Horstmann: Stamped on reverse ricasso "HORSTMANN/& SONS/PHILADELPHIA". Length overall 28½". Blade length 23½"; width at ricasso 1¾". Single wide fuller. Generic etching with gold and blue wash. Grip is cast brass, eagle-head pommel with continuous back-strap, knuckle bow reverse "P", Langets: none. Scabbard is brass-mounted leather with frog stud only. Throat 4¼", drag 7".

Horstmann: Stamped under guard "HORSTMANN" and on the blade reverse ricasso a king's head. Length overall 28½". Blade-length 23½"; width at ricasso 1½". Single wide fuller. Generic etching with gold and blue wash. Grip is cast brass with eagle-head pommel, knucklebow reverse "P". Langets: none. Scabbard: none.

Horstmann: Stamped under crossguard "HORSTMANN". Length overall 28¾". Blade length 23¾"; width at ricasso 1". Single wide fuller. Etched with gold and blue wash and on the obverse "W.H.HORSTMANN & SONS/PHILADELPHIA" Grip is cast brass with eagle-head pommel, knuckle bow reverse "P". Langets: none. Scabbard is brass-mounted leather with frog stud only.

MARINE OFFICER'S SWORD

Widmann: Etched on blade reverse "F.W./WIDMANN/PHILADELPHIA" and "U.S. MARINE" on the obverse. Blade length 30½", width at ricasso 1½". Single wide fuller turning into double parallel narrow fullers. Hilt carved ivory with two 6-pointed stars on each side. Pointed langets. Ridged, silver-plated scabbard.

UNKNOWN MAKER

No Maker Marks: Length overall 32-1/8". Blade length 27¼"; width at ricasso 1¼". Single wide fuller. Etched on obverse with eagle and 16 stars, and on reverse "honour and my country" with gold and blue wash. Grip is cast brass with eagle-head pommel, very similar to the marine musician sword. Knucklebow "D". Langets. Scabbard is brass-mounted leather with frog stud only. Throat 4¼", Drag 7".

No Maker Marks: Length overall 30½", blade length 25½"; width at ricasso 1¼". Single wide fuller. Grip is cast brass with eagle-head pommel very similar to the marine musician's sword. Knucklebow "D". Langets: none. Scabbard: none.

No Maker Marks: Length overall 35½", blade length 30"; width at ricasso 1¾". Single wide fuller. Etched on obverse with eagle, 15 stars and motto. Generic on reverse. Grip is cast brass, eagle-head pommel very similar to the marine musician's sword. Knuckle bow "D". Langets: none. Scabbard: none.